


KiM software allows you to develop quick quotes, create job sheets, WIP reports, allows tracking of jobs, time, costs, clients. Sign Sense aims to increase profitability throughout your business. Enabling you to increase productivity and control.

Sign Sense is easy to use and operates across both Windows and Mac operating system.



Sign Sense - 1 runtime user

If your opening a business for the first time or you have been up and running for years... Sign Sense is a great starter level solution.

Simple, easy to use !

Sales

- Organise priority of sales follow ups
- Build clients respect via accurate profiling
- Sales reports

Quotes

- Generate quotes quickly
- Quote letters
- Manage all quoting activities
- Add materials, contractors, resources & labour
- Track quotes

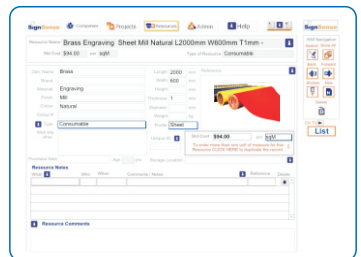
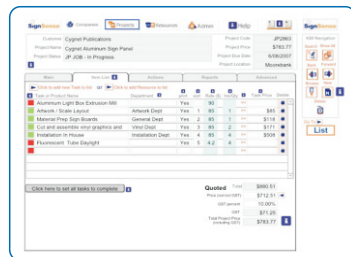
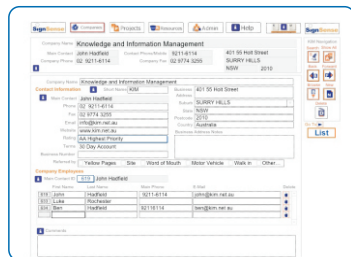
Projects

- Job Sheets - WIP reports
- Time keeping, consumable & cost tracking
- Work order register & reporting
- Instantly know the job status
- Full search & find functionality
- Categorise: Jobs in Progress plus many more

Resources

- Find & access all electronic files
- OH&S, MSDS & management reports
- Track & categorise all materials, products, paperwork, artwork, files... anything!
- File management
- Artwork register with full search & find function

Sign Sense Screen Shots



How can KiM software improve your business?

One of the biggest challenges in business today is managing information quickly, efficiently and effectively. Do you need to control, improve your status quo to manage with peace of mind? Then why not consider Sign Sense.

The unique KiM "status change" method allows all staff to track, edit and modify all incidents live.

For further information on KiM Sign Sense software please email us at enquiries@kim.net.au or phone on 1300 KIM BPM (1300 546 276).